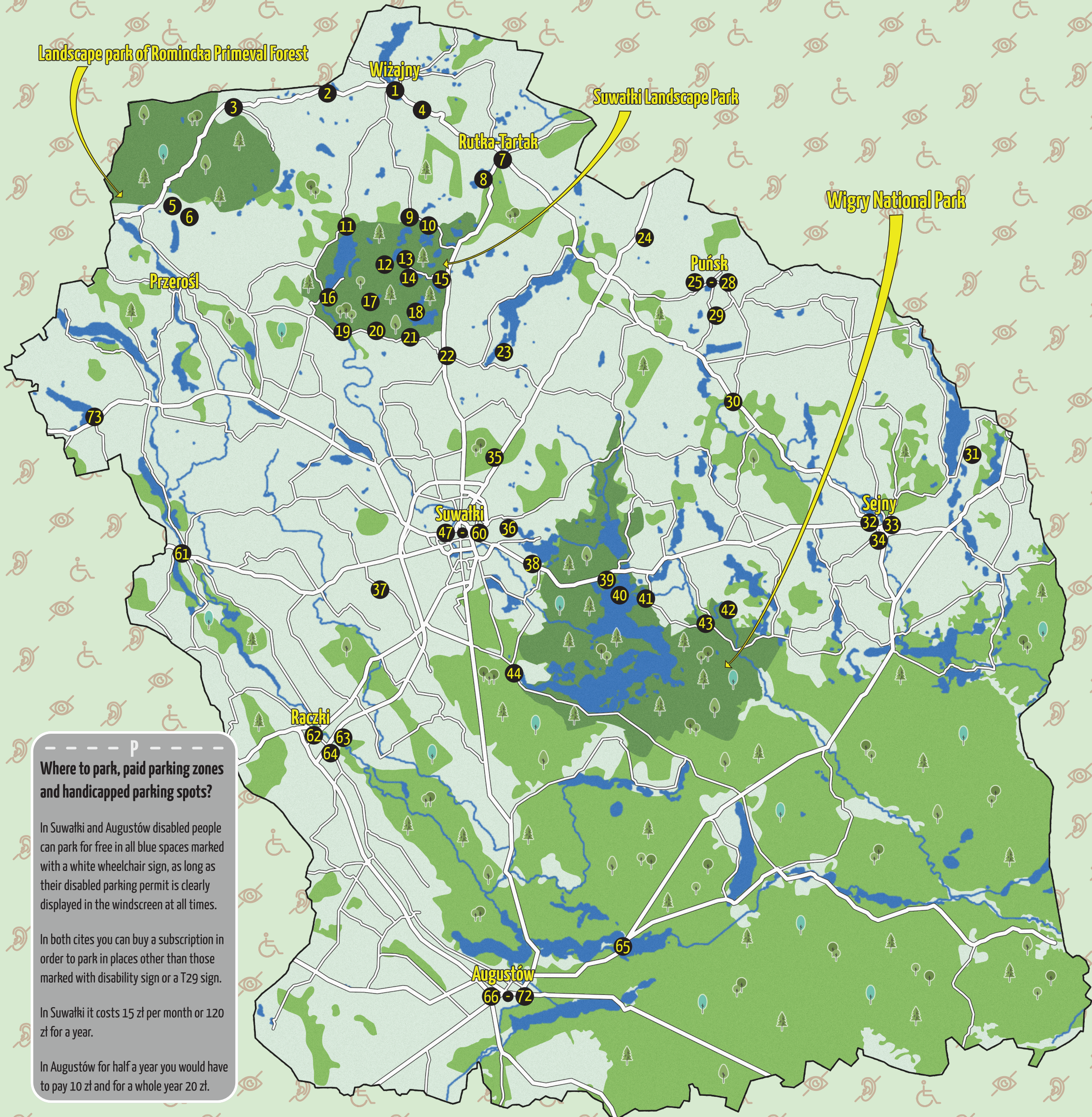


# TOURIST ATTRACTIONS OF THE SUWAŁKI REGION



## Accessibility of the Suwałki Region



**Where to park, paid parking zones and handicapped parking spots?**

In Suwałki and Augustów disabled people can park for free in all blue spaces marked with a white wheelchair sign, as long as their disabled parking permit is clearly displayed in the windscreen at all times.

In both cities you can buy a subscription in order to park in places other than those marked with disability sign or a T29 sign.

In Suwałki it costs 15 zł per month or 120 zł for a year.

In Augustów for half a year you would have to pay 10 zł and for a whole year 20 zł.



This map publication was co-financed by the Marshal's Office of the Podlaskie Region and the Suwałki City





- Wheelchair accessible
- Wheelchair accessible with assistance from carer
- Inaccessible or difficult to access with a wheelchair

- Ramp / Elevator for people with disabilities
- Accessible toilet
- Facilities for blind and visually impaired

- Accessible with a guide dog
- Facilities for deaf and hearing impaired
- Sign language

# SUWAŁKI REGION? - YOU HAVE TO SEE THAT!

- 1** St Teresa of Ávila's Church and wooden belfry  
ul. Szkolna 7, Wizajny
- 2** Tripoint 'Wisztyniec' in Bolcie  
Path leading from parking lot in Bolcie
- 3** Landscape Park of Romincka Forest Headquarters  
ul. Szkolna 1, Żytkiemy
- 4** Viewpoint on Góra Rowelska  
Located on the peak, about 100m from a parking lot

●●● STAŃCZYKI ●●●

- 5** Viewpoint in Stańczyki  
Near Dobellus Duży lake on the road to viaducts
- 6** Railway viaducts in Stańczyki  
Seen without problems when in Stańczyki

●●● RUTKA-TARTAK ●●●

- 7** Playground in Rutka-Tartak  
ul. 3 Maja, www.basniewyszlak.pl
- 8** Commune beach with a slide and camping place  
Road 655, way to the Parking lot on the left side, entry before the town sign

●●● SUWAŁKI LANDSCAPE PARK ●●●

- 9** Wooden Roman Catholic cemetery chapel  
On the cemetery, near the church in Smolniki
- 10** Viewpoint 'U Pana Tadeusza'  
Near the cemetery in Smolniki, on the way from the village to road 655

- 11** Stara Hańcza and Lake Hańcza  
Near it you will find a parking lot, ruins of a manor house and a lime tree park

- 12** Nature Reserve of Łopuchowo Boulder Field  
It is located in the Łopuchowo village

- 13** Adventure park 'Twierdza Jaćwingów'  
Udziejek 18, www.twierdzajacwingow.pl

- 14** Old mill, starting place for canoeing on Szeszupa  
Located in Udziejek village near Szeszupa river

- 15** Góra Cisowa  
About 200 m from parking lot located in Gulbieniszki vilalage

- 16** Nature Reserve of Bachanowo Boulder Field  
Parking lot near the road, from there travel down till you get to Czarna Hańcza river

- 17** Old Believers Orthodox Church and village  
Wodzilki, village near Szeszupa river

- 18** Góra Zamkowa, Yotvingian gord  
Go from Szurpiły village to parking in Targowisko, after that you have to walk around 1 km to the mountain

- 19** Suwałki Landscape Park Headquarters  
Malesowizna 24, near Staw Turtulski and old mill ruins, www.spk.org.pl

- 20** Nature Reserve of Rutka Boulder Field and Wodzilki Amphitheatre  
On the road from Malesowizna to Szurpiły

- 21** The Yotvingians Hall of Memory  
Szurpiły 32

- 22** Antique Roman Catholic Church  
ul. Suwalska 38, Jeleniewo

- 23** WOSIR Szelment  
Szelment 2, www.wosir-szelment.pl

- 24** Podlaskie MiniZOO  
Mikołajówka village near E8 road, about 1 km behind Jezioroki village

●●● PUŃSK ●●●

- 25** St Mary's Neo-Gothic Church  
ul. Adama Mickiewicza 55

- 26** Old Lithuanian farmhouse and the fairy tale village of two masters  
ul. Szkolna 67, www.punsk-kultura.pl

- 27** 'Old Presbytery' Regional Museum  
ul. Adama Mickiewicza 70

- 28** Józef Vaina's Ethnographic Museum and traditional craft workshop  
ul. 11 Marca 17

- 29** Prussian-Yotvingian Settlement  
Oszkinie 42, www.osada.prusaspira.org

- 30** St Isidore the Laborer's Roman Catholic Church and monastery  
Smolany 16

- 31** Czesław Miłosz's manor house  
Krasnogruda, www.pogranicze.sejny.pl

●●● SEJNY ●●●

- 32** St Mary's Basilica and Dominicans monastery  
Plac Świętej Agaty 1

- 33** White Synagogue, Talmudic House and Old Post Office  
Marszałka Józefa Piłsudskiego 41

- 34** Romuald Jałbrzykowski's Museum of Sejny Region  
Marszałka Józefa Piłsudskiego 28, muzeum.sejny.pl

- 35** Nature Reserve of Yotvingian Cemetery  
Szwajcaria, road E67

- 36** Ski resort 'Dąbrówka'  
Dąbrówka 10, www.dabrowka.suwalki.pl

- 37** MiniZoo Podlaska Toskania  
Wychodne 2

●●● WIGRY NATIONAL PARK ●●●

- 38** Wigry National Park Headquarters, ethnographic and nature exhibitions  
Krzywe 82, www.wigry.org.pl

- 39** Wigry Museum  
Stary Folwark 50

- 40** Post-Camaldolian Monastery in Wigry  
Wigry 11, www.wigry.pro

- 41** 'The history and traditions of fishing and fishery in lake Wigry' exhibition  
Czerwony Folwark 5, www.wigry.org.pl

- 42** Piotr Malczewski's photo gallery and the Museum of Mongolia  
Buda Rуска 16, piotrmalczewski.pl

- 43** Art Gallery - StrumiHo  
Maćkowa Ruda 17

- 44** Wigry Narrow Gauge Railway  
Płociczno-Tartak 40

●●● SUWAŁKI ●●●

- 45** District Museum, Resursa Obywatelska  
ul. Tadeusza Kościuszki 81, www.muzeum.suwalki.pl

- 46** Maria Konopnicka's Museum and Dwarves' Corner  
ul. Tadeusza Kościuszki 31, www.mk.muzeum.suwalki.pl

- 47** St Alexander's Church  
plac Marszałka Józefa Piłsudskiego 1/2

- 48** 19th century Post-Tsarist Barracks, Hotel Loft 1898  
ul. Generała Kazimierza Pułaskiego 24K, www.hotelloft.pl

- 49** Cemeteries of Seven Faiths  
Cemeteries accessible from Zarzeczce street

- 50** Suwałki Municipal Culture Centre  
ul. Papieża Jana Pawła II 5, www.soksuwalki.eu, near it you can find a city bus station

- 51** Suwałki Aquapark  
ul. Papieża Jana Pawła II 7, www.aquapark.suwalki.pl

- 52** Suwałki Arena  
ul. Zarzeczce 26, www.suwalkiarena.pl

- 53** Early-19th century Historic Tsar's prison, Shopping Centre 'Suwałki Plaza'  
ul. Generała Józefa Dwernickiego 15, www.suwalkiplaza.com.pl

- 54** City Hall and former guardhouse  
ul. Adama Mickiewicza 1, www.um.suwalki.pl

- 55** National Archives  
ul. Tadeusza Kościuszki 69, www.suwalki.ap.gov.pl

- 56** 'Stara Łaźnia' Art Gallery  
ul. Tadeusza Kościuszki 33C

- 57** Tourist Information Centre in Suwałki  
ul. Księdza Kazimierza Aleksandra Hamerszmita 16, www.pogodnesuwalki.pl

- 58** Maria Konopnicka's Public Library  
ul. Emilii Plater 33a, www.bpsuwalki.pl

- 59** 'Chłodna 20' Modern Art Gallery  
ul. Noniewicza 71

- 60** Sport and Recreation Centre  
ul. Wojska Polskiego 2, www.osir.suwalki.pl

- 61** Museum of East Prussian Fortification  
Bakalarzewo, road 653 to Olecko, turn right after leaving Bakalarzewo town

- 62** 16th century urban spatial structure with market place and 20th century town hall  
In the centre of Raczki

- 63** Ruins of neo-gothic Pac's Palace  
Ruins are located behind 'Kordegarda' near Rospuda river

- 64** Tourist Service Centre 'Kordegarda'  
Dowspuda 9A

●●● AUGUSTÓW ●●●

- 65** Studzieniczna Sanctuary  
Studzieniczna 10

- 66** Zygmunt August Market Square  
Rynek Zygmunta Augusta 2

- 67** Museum of Augustów Canal  
ul. 29 Listopada 5a

- 68** Tourist Information Centre in Augustów  
Rynek Zygmunta Augusta 19

- 69** Catholic Church of the Sacred Heart of Jesus  
ul. Księdza Skorupki 6

- 70** Musuem of Augustów Region  
ul. Hoża 7

- 71** 'Augustowska Miodosytinia' - craft mead workshop  
ul. Tytoniowa 9

●●●

- 72** Ruins of Renaissance Gothic Evangelical Church  
Near the road leading to Suwałki in Mieruniszki village, on the hill near the east shore of the lake

You will find photos and descriptions on our website.

Scan this QR code



SCAN ME

or go to this website  
www.pogodnesuwalki.pl/accessibility-map

